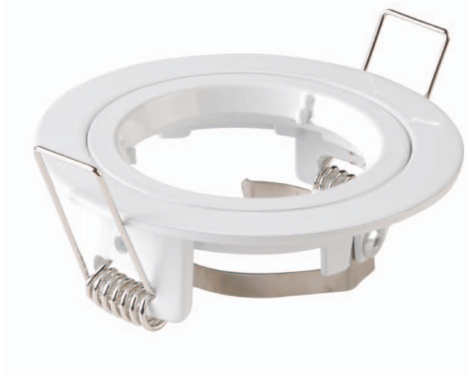


# GU10 Downlight Trim Ring

## 80mm - White



Product Code: FLTRIMW  
Barcode: 6002844077853



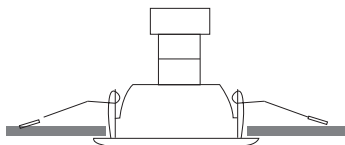
### GU10 Downlight Trim Ring

GU10 Downlight Trim Ring sits flush into your ceiling giving you a streamline look in a colour of your choice complimenting your room's interior.

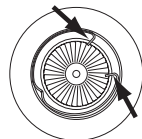
### Basic Diagram

### Bulb replacement

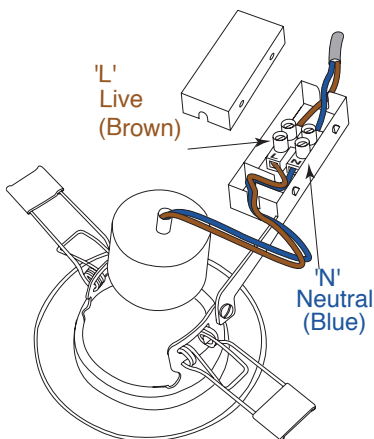
- 1) Switch off and allow unit to cool down before replacing.
- 2) Remove wire retaining clip by squeezing tabs together, or turn decorative bezel anti-clockwise to release bulb.
- 3) Remove old bulb by pushing into lampholder and twisting anti-clockwise. Replace with bulb type GU10
- 4) Push the bulb into the unit and secure by refitting the decorative bezel, or the wire retaining clip.



Non - adjustable tilt head



Wire retaining clip



### PACKAGE DIMENSIONS



Height (mm)	Depth (mm)	Width (mm)	Weight (kg)	QTY
39	90	90	0.06	1

- GU10 fitting
- Twist and lock fitting
- Fitting colour: White
- Non - adjustable tilt head

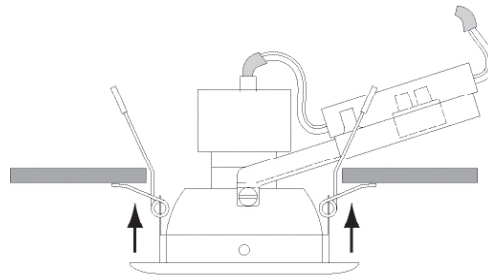
### TECHNICAL INFORMATION

#### Specifications:

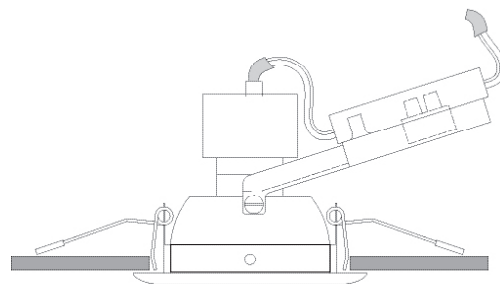
GU10 Fitting	
Material:	Die-Cast aluminium
Diameter:	80mm
Cutting:	70mm
Height:	25mm

### Fitting

- 1) Point the spring clips upwards and fit the two longer arms into the ceiling hole (See diagram 1 below).



- 2) Push the unit upward until firmly in position, ensuring that the cable is not trapped. (See diagram 2 below).



- 3) Fit the bulb into the lampholder by pushing in and twisting clockwise. Do not exceed the maximum wattage.
- 4) Push the bulb into the unit and secure by refitting the decorative bezel, or the wire retaining clip.
- 5) Replace the circuit fuse and switch on the mains to test.

To adjust tilt downlights push on rim of bulb housing - only adjust when bulb is cold.

### THE PACKAGE CONTAINS



1 x GU10 Downlight Trim Ring

[www.elliesrenewable.co.za](http://www.elliesrenewable.co.za)

Brought to you by **ELLIES**



RENEWABLE ENERGY